

STATE OF NORTH CAROLINA  
DEPARTMENT OF TRANSPORTATION  
HIGHWAY DIVISION 6

# PLANS

**Let Date: October 1, 2025**

**CONTRACT ID: DF00534**

**TIP NO.: -----**

**FEDERAL AID NO.: STATE FUNDED**

**WBS ELEMENT NO.: 2026CPT.06.08.20782.1 & 2026CPT.06.08.20782.2**

**ROUTE NO.: VARIOUS**

**LOCATION: VARIOUS**

**COUNTY: ROBESON**

**TYPE OF WORK: ASPHALT SURFACE TREATMENT – DOUBLE & TRIPLE SEALS**

**LENGTH OF PROJECT: 36.55 MILES**

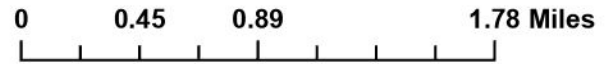
# Robeson County Preservation, 2026

Contract: DF00534

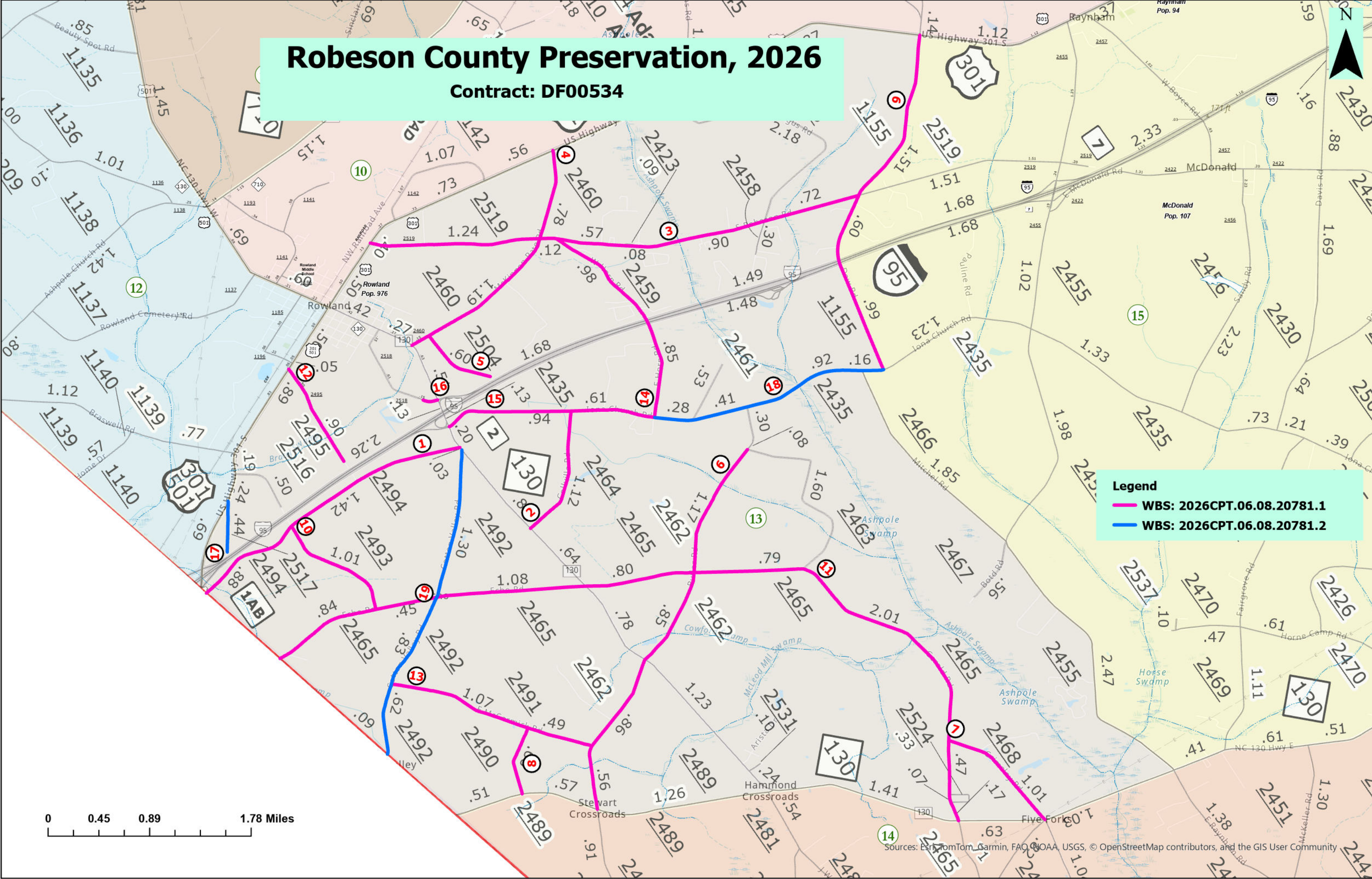


**Legend**

- WBS: 2026CPT.06.08.20781.1
- WBS: 2026CPT.06.08.20781.2

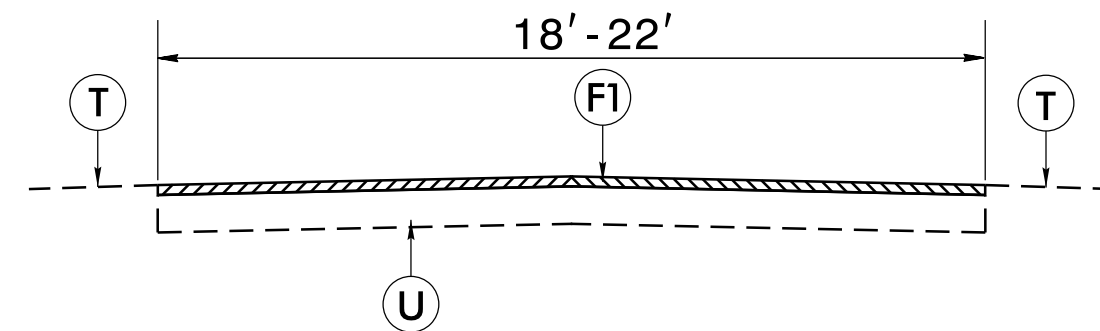


Sources: Esri, TomTom, Garmin, FAO, NOAA, USGS, © OpenStreetMap contributors, and the GIS User Community

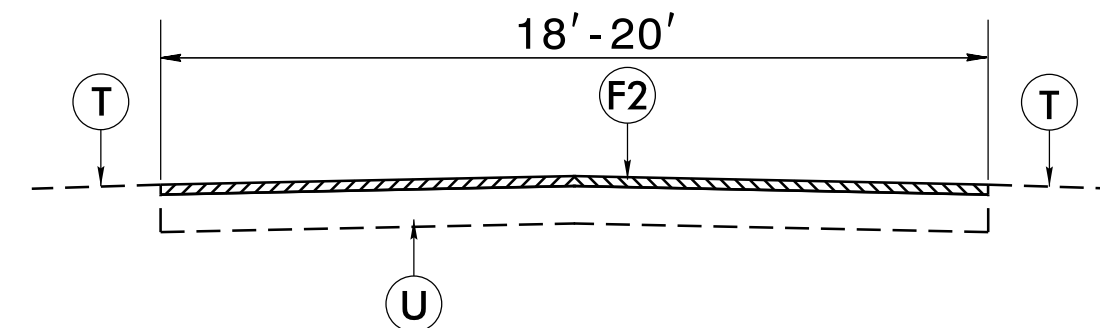


# PAVEMENT SCHEDULE

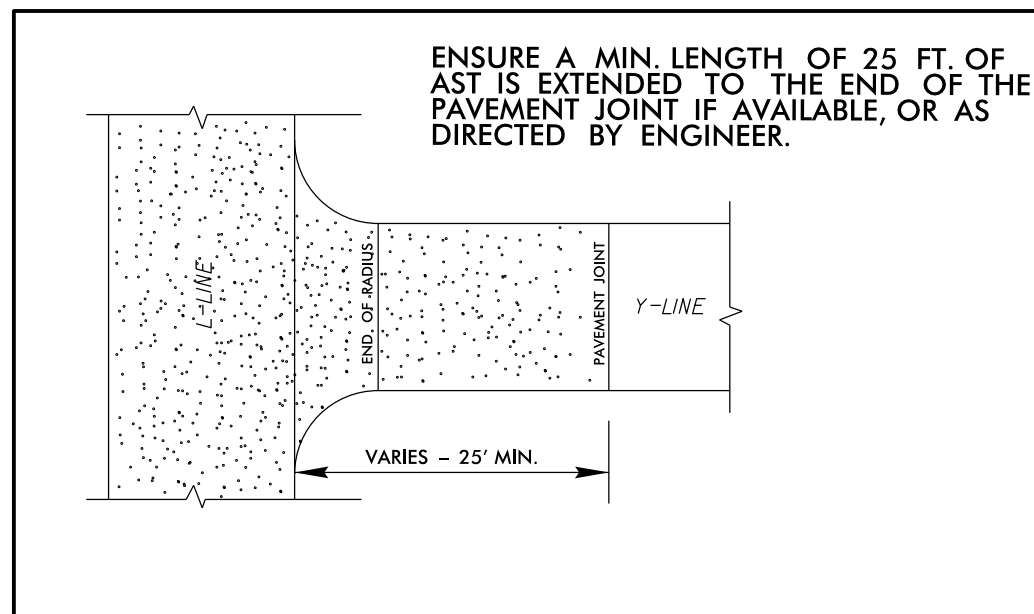
F1	DOUBLE SEAL PLACED ACCORDING TO THE SPECIAL PROVISION
F2	TRIPLE SEAL PLACED ACCORDING TO THE SPECIAL PROVISION
T	EXISTING SHOULDER
U	EXISTING ASPHALT PAVEMENT



TYPICAL SECTION NO. 1



TYPICAL SECTION NO. 2



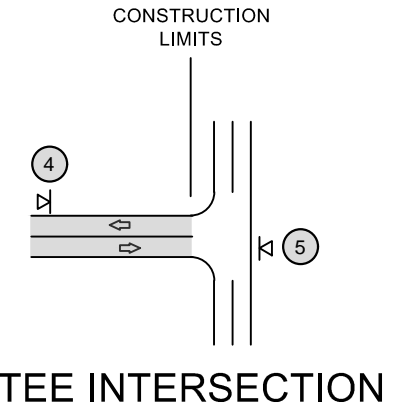
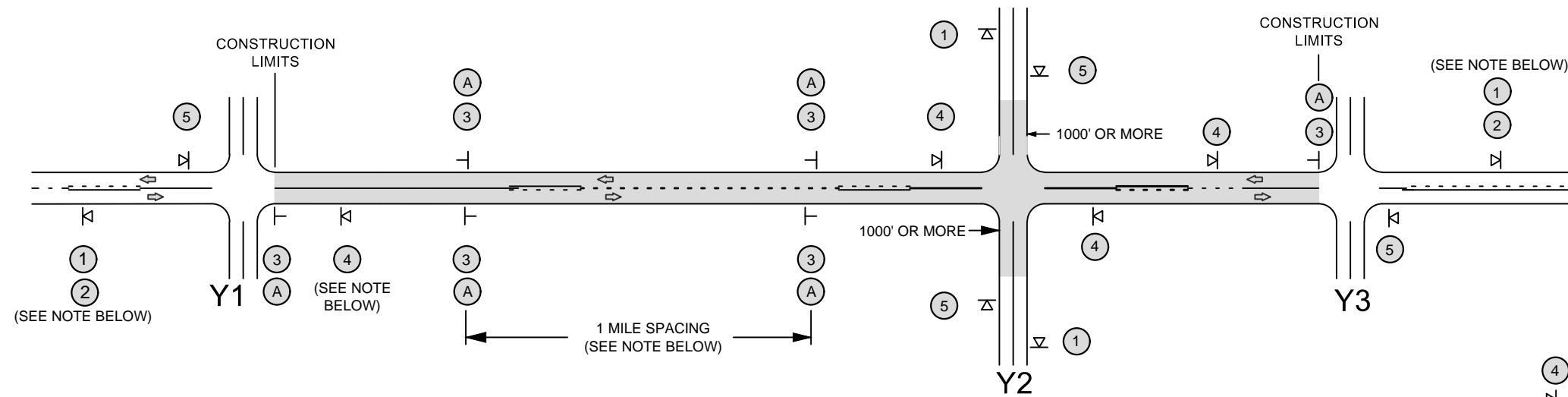
DETAIL 1  
-Y- LINE INTERSECTION TREATMENT

6/2/99

Q:\SEP-2025\_0952  
 33311\ASPHALT  
 0952  
 1\2025\AST\DF00534\_2025CPT\_06.08.20782.1.ctb.Fall 2025\_Robeson\Plans\typ.dgn

# SIGNING FOR ASPHALT SURFACE TREATMENT

LEGEND	
	PORTABLE SIGN
	STATIONARY SIGN
	DIRECTION OF TRAFFIC FLOW



## MAINLINE (-L-) SIGNING

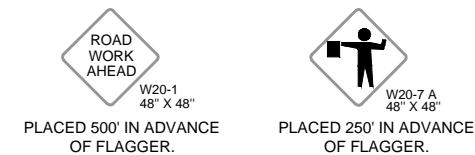
## -Y- LINE SIGNING

SIGNING NOTES AND PLACEMENT PER DIRECTION	①		ROAD WORK AHEAD W20-1 48" X 48"	- PLACE 1000' PRIOR TO BEGINNING OF CONSTRUCTION LIMITS. ONLY USED ON -Y- LINES IF RESURFACING LIMITS EXTEND 1000' ALONG -Y- LINE.
	②		NEXT XX MILES W7-3aP 24" X 18"	- SIGN #2 ONLY USED WHEN RESURFACING LIMITS ARE 2 OR MORE MILES IN LENGTH. ROUND UP TO THE NEAREST WHOLE NUMBER. DO NOT USE FRACTIONAL OR DECIMAL NUMBERS.
	③		LOOSE GRAVEL W8-7 48" X 48"	- ALTERNATE THE FOLLOWING TWO SIGNS:  - STARTING WITH "LOOSE GRAVEL" (W8-7) FOLLOWED BY "UNMARKED PAVEMENT".  - PLACE INITIALLY AT THE CONSTRUCTION LIMITS AND SPACED 1 MILE APART THEREAFTER.
			UNMARKED PAVEMENT SP 48" X 48"	- AT TEE INTERSECTIONS INSTALL INITIALLY 0.5 MILE FROM INTERSECTION AND SPACE 1 MILE APART THEREAFTER.
	A		SPEED LIMIT 35 W13-1P 18" X 18"	PLACE INITIALLY AT THE CONSTRUCTION LIMITS AND SPACED 1 MILE APART THEREAFTER. IF NO -Y- LINES EXIST, PLACE 2ND SET 1/2 MILE FROM THE CONSTRUCTION LIMITS AND THEN SPACE 1 MILE THEREAFTER. SPEED LIMIT SIGN MAY BE PLACED ON SAME POST AS LOOSE GRAVEL SIGN, IF DESIRED.
	④		ROAD UNDER CONST SP 13106 48" X 48"	- THESE ARE FOR -Y- LINES THAT ARE "THROUGH" ROADWAYS. DEAD END AND SUBDIVISION ROADS ARE NOT "THROUGH" ROADWAYS. - INSTALL 500' +/- FROM EACH -Y- LINE APPROACH AS SHOWN ABOVE. - FOR MULTIPLE -Y- LINES THAT ARE SEPARATED BY 0.25 MILES OR LESS, TREAT AS A SINGLE UNIT AND INSTALL WITHIN 500' OF EACH APPROACH. - A MAXIMUM OF 2 SIGN SETS PER MILE. DO NOT INSTALL WHEN -Y- LINES ARE WITHIN 0.5 MILES FROM "END ROAD WORK" SIGN.
⑤		END ROAD WORK G20-2 A 48" X 24"	PLACE 500' FOLLOWING THE END OF CONSTRUCTION LIMITS OR AS SHOWN WHEN WORK ENDS AT A 3-WAY TEE INTERSECTION.	
THE ABOVE SIGNS ARE ALL THAT ARE REQUIRED FOR A CONTRACTOR TO BEGIN A RESURFACING CONTRACT. ANY ADDITIONAL SIGNS REQUESTED BY NCDOT DIVISIONS SHALL BE INSTALLED WITHIN 7 BUSINESS DAYS OF THE START OF CONTRACT WORK.				
MAPS LESS THAN 2 MILES	FOR AST RESURFACING MAPS WITH CONSTRUCTION LIMITS LESS THAN 2 MILES IN LENGTH, USE A STATIONARY "LOOSE GRAVEL" SIGN AT THE BEGINNING CONSTRUCTION LIMIT FOLLOWED BY AN "UNMARKED PAVEMENT" SIGN MIDWAY THROUGH AND AN "END ROAD WORK" SIGN AT THE END CONSTRUCTION LIMIT.			

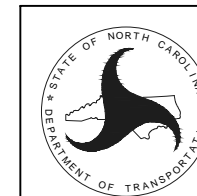
### STATIONARY SIGNING NOT REQUIRED FOR THE FOLLOWING -Y- LINE CONDITIONS:

- 1) LESS THAN 1000' OF RESURFACING ALONG -Y- LINE
- 2) SUBDIVISION ROADS
- 3) DEAD END ROADS

WHEN PAVING/CONSTRUCTION ACTIVITIES PROCEED ACROSS AN UNSIGNED -Y- LINE, PORTABLE ADVANCE WARNING SIGNS SHALL BE USED ALONG THE -Y- LINE AS SHOWN BELOW. REMOVE UPON COMPLETION OF WORK.



**NOTE:**  
IT IS THE CONTRACTOR'S RESPONSIBILITY TO ENSURE THE PROPER PLACEMENT AND LOCATION OF WORK ZONE SIGNING PER THE STANDARD DRAWING. NCDOT HAS THE RIGHT TO INSPECT THE PLANNED LOCATIONS AND REQUIRE ADJUSTMENT BY THE CONTRACTOR, AS NEEDED, OR AS DIRECTED BY THE ENGINEER.



REVISED - 12-13-2018

NCDOT - DIVISION 6

ADVANCE WARNING SIGNS FOR 2-LANE ROADWAY ASPHALT SURFACE TREATMENT

PROJECT NO.	SHEET NO.	TOTAL NO.
08.20782.1, 2026CPT.06		

## SUMMARY OF QUANTITIES

PROJECT NO	COUNTY	MAP NO	ROUTE	DESCRIPTION	TYP NO	LANES	LANE TYPE	LENGTH	WIDTH	BEG N MP	END MP	1803500000-E	1836000000-E	1838000000-E	
												ASPHALT SURFACE TREATMENT, DOUBLE SEAL	ASPHALT SURFACE TREATMENT, TRIPLE SEAL	EMULSION FOR ASPHALT SURFACE TREATMENT	
								MI	FT	SY	SY	GAL			
2026CPT.06.08.20782.1	Robeson	1	SR-2494 / WILLIAMS POND RD	FROM SC SL TO NC130	1	2	2WU	2.3	20	0	2.3	26,987		16,462	
<b>TOTAL FOR MAP NO. 1</b>								<b>2.3</b>				<b>26,987</b>		<b>16,462</b>	
2026CPT.06.08.20782.1	Robeson	2	SR-2464 / COLVILLE RD	FROM NC 130 TP SR 2435	1	2	2WU	1.12	20	0	1.12	13,141		8,016	
<b>TOTAL FOR MAP NO. 2</b>								<b>1.12</b>				<b>13,141</b>		<b>8,016</b>	
2026CPT.06.08.20782.1	Robeson	3	SR-2519 / S ROBESON RD	FROM US 301 TO SR 1155	1	2	2WU	3.63	22	0	3.63	42,592		25,981	
<b>TOTAL FOR MAP NO. 3</b>								<b>3.63</b>				<b>42,592</b>		<b>25,981</b>	
2026CPT.06.08.20782.1	Robeson	4	SR-2460 / MCKINNON PATE RD	FROM US 301 TO NC 130	1	2	2WU	2.12	18	0	2.12	24,875		15,174	
<b>TOTAL FOR MAP NO. 4</b>								<b>2.12</b>				<b>24,875</b>		<b>15,174</b>	
2026CPT.06.08.20782.1	Robeson	5	SR-2504 / CARPER RD	FROM SR 2460 TO DEAD END	1	2	2WU	0.6	20	0	0.6	7,040		4,294	
<b>TOTAL FOR MAP NO. 5</b>								<b>0.6</b>				<b>7,040</b>		<b>4,294</b>	
2026CPT.06.08.20782.1	Robeson	6	SR-2462 / BUTLER RD	FROM SR 2489 TO SR 2463	1	2	2WU	3.44	20	2.77	6.21	40,363		24,621	
<b>TOTAL FOR MAP NO. 6</b>								<b>3.44</b>				<b>40,363</b>		<b>24,621</b>	
2026CPT.06.08.20782.1	Robeson	7	SR-2468 / GRIMSLEY RD	FROM NC 130 TO SR 2465	1	2	2WU	1.01	20	0	1.01	10,666		6,506	
<b>TOTAL FOR MAP NO. 7</b>								<b>1.01</b>				<b>10,666</b>		<b>6,506</b>	
2026CPT.06.08.20782.1	Robeson	8	SR-2490 / AYERS RD	FROM SR 2489 TO SR2491	1	2		0.6	20	0	0.6	7,040		4,294	
<b>TOTAL FOR MAP NO. 8</b>								<b>0.6</b>				<b>7,040</b>		<b>4,294</b>	
2026CPT.06.08.20782.1	Robeson	9	SR-1155 / DEW RD	FROM SR 2435 TO US 301	1	2	2WU	3.11	20	0	3.11	36,491		22,260	
<b>TOTAL FOR MAP NO. 9</b>								<b>3.11</b>				<b>36,491</b>		<b>22,260</b>	
2026CPT.06.08.20782.1	Robeson	10	SR-2493 / BROWN FARMS RD	FROM SR 2465 TO SR 2494	1	2	2WU	1.01	20	0	1.01	11,851		7,229	
<b>TOTAL FOR MAP NO. 10</b>								<b>1.01</b>				<b>11,851</b>		<b>7,229</b>	
2026CPT.06.08.20782.1	Robeson	11	SR-2465 / GERALD RD	FROM NC 130 TO SC SL	1	2		6.68	20	1.87	8.55	78,379		47,811	
<b>TOTAL FOR MAP NO. 11</b>								<b>6.68</b>				<b>78,379</b>		<b>47,811</b>	
2026CPT.06.08.20782.1	Robeson	12	SR-2495 / BRACEY CEMETERY RD	FROM US 301 TO DEAD END	1	2	2WU	0.9	20	0	0.9	10,560		6,442	
<b>TOTAL FOR MAP NO. 12</b>								<b>0.9</b>				<b>10,560</b>		<b>6,442</b>	
2026CPT.06.08.20782.1	Robeson	13	SR-2491 / MCCORMICK RD	FROM SR 2492 TO SR 2462	1	2	2WU	1.56	20	0	1.56	18,304		11,165	
<b>TOTAL FOR MAP NO. 13</b>								<b>1.56</b>				<b>18,304</b>		<b>11,165</b>	
2026CPT.06.08.20782.1	Robeson	14	SR-2459 / HORNE RD	FROM SR 2519 TO SR 2435	1	2	2WU	1.85	20	0	1.85	21,707		13,241	
<b>TOTAL FOR MAP NO. 14</b>								<b>1.85</b>				<b>21,707</b>		<b>13,241</b>	
2026CPT.06.08.20782.1	Robeson	15	SR-2435 / IONA CHURCH RD	FROM SR 2459 TO NC 130	1	2	2WU	1.55	20	7.9	9.45	18,187		11,094	
<b>TOTAL FOR MAP NO. 15</b>								<b>1.55</b>				<b>18,187</b>		<b>11,094</b>	
2026CPT.06.08.20782.1	Robeson	16	SR-2518 / S PINE ST	FROM NC 130 TO END PAVEMENT	1	2		0.11	22	0	0.11	1,646		1,004	
<b>TOTAL FOR MAP NO. 16</b>								<b>0.11</b>				<b>1,646</b>		<b>1,004</b>	
<b>TOTAL FOR PROJ NO. 2026CPT.06.08.20782.1</b>								<b>31.59</b>				<b>369,829</b>		<b>225,594</b>	
2026CPT.06.08.20782.2	Robeson	17	SR-2517 / PROCTOR RD	FROM US 301 TO DEAD END	2	2	2WU	0.44	20	0	0.44		6,195	5,514	
<b>TOTAL FOR MAP NO. 17</b>								<b>0.44</b>					<b>6,195</b>	<b>5,514</b>	
2026CPT.06.08.20782.2	Robeson	18	SR-2435 / IONA CHURCH RD	FROM SR 1155 TO SR 2459	2	2	2WU	1.77	18	6.13	7.9		20,768	18,484	
<b>TOTAL FOR MAP NO. 18</b>								<b>1.77</b>					<b>20,768</b>	<b>18,484</b>	
2026CPT.06.08.20782.2	Robeson	19	SR-2492 / COTTON VALLEY RD	FROM SC SL TO NC 130	2	2	2WU	2.75	20	0	2.75		29,040	25,846	
<b>TOTAL FOR MAP NO. 19</b>								<b>2.75</b>					<b>29,040</b>	<b>25,846</b>	
<b>TOTAL FOR PROJ NO. 2026CPT.06.08.20782.2</b>								<b>4.96</b>					<b>56,003</b>	<b>49,844</b>	
<b>GRAND TOTAL</b>								<b>36.55</b>					<b>369,829</b>	<b>56,003</b>	<b>275,438</b>

PROJECT NO.	SHEET NO.	TOTAL NO.
.06.08.20782.1, 2026CPT.06.08		

## THERMOPLASTIC AND PAINT QUANTITIES

PROJECT NO	COUNTY	MAP NO	ROUTE	DESCRIPTION	TYP NO	LANES	LANE TYPE	LENGTH	WIDTH	BEGIN MP	END MP	4413000000-E	4457000000-N	4850000000-E	4890000000-E	
												WORK ZONE ADVANCE/GENERAL WARNING SIGNING	TEMPORARY TRAFFIC CONTROL	4" LINE REMOVAL	GENERIC PAVEMENT MARKING - HOT SPRAY THERMO - 4" 50 MILS-WHITE	GENERIC PAVEMENT MARKING - HOT SPRAY THERMO - 4" 50 MILS-YELLOW
												SF	LS	LF	LF	LF
2026CPT.06.08.20782.1	Robeson	1	SR-2494 / WILLIAMS POND RD	FROM SC SL TO NC130	1	2	2WU	2.3	20	0	2.3	368	1.00		24,288	17,002
<b>TOTAL FOR MAP NO. 1</b>								<b>2.3</b>				<b>368</b>	<b>1</b>		<b>24,288</b>	<b>17,002</b>
2026CPT.06.08.20782.1	Robeson	2	SR-2464 / COLVILLE RD	FROM NC 130 TP SR 2435	1	2	2WU	1.12	20	0	1.12	179			11,827	8,279
<b>TOTAL FOR MAP NO. 2</b>								<b>1.12</b>				<b>179</b>			<b>11,827</b>	<b>8,279</b>
2026CPT.06.08.20782.1	Robeson	3	SR-2519 / S ROBESON RD	FROM US 301 TO SR 1155	1	2	2WU	3.63	22	0	3.63	581		65,166	38,333	26,833
<b>TOTAL FOR MAP NO. 3</b>								<b>3.63</b>				<b>581</b>		<b>65,166</b>	<b>38,333</b>	<b>26,833</b>
2026CPT.06.08.20782.1	Robeson	4	SR-2460 / MCKINNON PATE RD	FROM US 301 TO NC 130	1	2	2WU	2.12	18	0	2.12	339			22,387	15,671
<b>TOTAL FOR MAP NO. 4</b>								<b>2.12</b>				<b>339</b>			<b>22,387</b>	<b>15,671</b>
2026CPT.06.08.20782.1	Robeson	5	SR-2504 / CARPER RD	FROM SR 2460 TO DEAD END	1	2	2WU	0.6	20	0	0.6	96				
<b>TOTAL FOR MAP NO. 5</b>								<b>0.6</b>				<b>96</b>				
2026CPT.06.08.20782.1	Robeson	6	SR-2462 / BUTLER RD	FROM SR 2489 TO SR 2463	1	2	2WU	3.44	20	2.77	6.21	550			36,326	25,428
<b>TOTAL FOR MAP NO. 6</b>								<b>3.44</b>				<b>550</b>			<b>36,326</b>	<b>25,428</b>
2026CPT.06.08.20782.1	Robeson	7	SR-2468 / GRIMSLEY RD	FROM NC 130 TO SR 2465	1	2	2WU	1.01	20	0	1.01	162			10,666	7,466
<b>TOTAL FOR MAP NO. 7</b>								<b>1.01</b>				<b>162</b>			<b>10,666</b>	<b>7,466</b>
2026CPT.06.08.20782.1	Robeson	8	SR-2490 / AYERS RD	FROM SR 2489 TO SR2491	1	2		0.6	20	0	0.6	96			6,336	4,435
<b>TOTAL FOR MAP NO. 8</b>								<b>0.6</b>				<b>96</b>			<b>6,336</b>	<b>4,435</b>
2026CPT.06.08.20782.1	Robeson	9	SR-1155 / DEW RD	FROM SR 2435 TO US 301	1	2	2WU	3.11	20	0	3.11	498			32,842	22,989
<b>TOTAL FOR MAP NO. 9</b>								<b>3.11</b>				<b>498</b>			<b>32,842</b>	<b>22,989</b>
2026CPT.06.08.20782.1	Robeson	10	SR-2493 / BROWN FARMS RD	FROM SR 2465 TO SR 2494	1	2	2WU	1.01	20	0	1.01	162			10,666	7,466
<b>TOTAL FOR MAP NO. 10</b>								<b>1.01</b>				<b>162</b>			<b>10,666</b>	<b>7,466</b>
2026CPT.06.08.20782.1	Robeson	11	SR-2465 / GERALD RD	FROM NC 130 TO SC SL	1	2		6.68	20	1.87	8.55	1,069			70,541	49,379
<b>TOTAL FOR MAP NO. 11</b>								<b>6.68</b>				<b>1,069</b>			<b>70,541</b>	<b>49,379</b>
2026CPT.06.08.20782.1	Robeson	12	SR-2495 / BRACEY CEMETERY RD	FROM US 301 TO DEAD END	1	2	2WU	0.9	20	0	0.9	144				
<b>TOTAL FOR MAP NO. 12</b>								<b>0.9</b>				<b>144</b>				
2026CPT.06.08.20782.1	Robeson	13	SR-2491 / MCCORMICK RD	FROM SR 2492 TO SR 2462	1	2	2WU	1.56	20	0	1.56	250			16,474	11,532
<b>TOTAL FOR MAP NO. 13</b>								<b>1.56</b>				<b>250</b>			<b>16,474</b>	<b>11,532</b>
2026CPT.06.08.20782.1	Robeson	14	SR-2459 / HORNE RD	FROM SR 2519 TO SR 2435	1	2	2WU	1.85	20	0	1.85	296			19,536	13,675
<b>TOTAL FOR MAP NO. 14</b>								<b>1.85</b>				<b>296</b>			<b>19,536</b>	<b>13,675</b>
2026CPT.06.08.20782.1	Robeson	15	SR-2435 / IONA CHURCH RD	FROM SR 2459 TO NC 130	1	2	2WU	1.55	20	7.9	9.45	248		27,826	16,368	11,458
<b>TOTAL FOR MAP NO. 15</b>								<b>1.55</b>				<b>248</b>		<b>27,826</b>	<b>16,368</b>	<b>11,458</b>
2026CPT.06.08.20782.1	Robeson	16	SR-2518 / S PINE ST	FROM NC 130 TO END PAVEMENT	1	2		0.11	22	0	0.11	18			1,162	813
<b>TOTAL FOR MAP NO. 16</b>								<b>0.11</b>				<b>18</b>			<b>1,162</b>	<b>813</b>
<b>TOTAL FOR PROJ NO. 2026CPT.06.08.20782.1</b>								<b>31.59</b>				<b>5,056</b>	<b>1,000</b>	<b>92,992</b>	<b>317,752</b>	<b>222,426</b>
2026CPT.06.08.20782.2	Robeson	17	SR-2517 / PROCTOR RD	FROM US 301 TO DEAD END	2	2	2WU	0.44	20	0	0.44	70				
<b>TOTAL FOR MAP NO. 17</b>								<b>0.44</b>				<b>70</b>				
2026CPT.06.08.20782.2	Robeson	18	SR-2435 / IONA CHURCH RD	FROM SR 1155 TO SR 2459	2	2	2WU	1.77	18	6.13	7.9	283		31,775	18,691	13,084
<b>TOTAL FOR MAP NO. 18</b>								<b>1.77</b>				<b>283</b>		<b>31,775</b>	<b>18,691</b>	<b>13,084</b>
2026CPT.06.08.20782.2	Robeson	19	SR-2492 / COTTON VALLEY RD	FROM SC SL TO NC 130	2	2	2WU	2.75	20	0	2.75	440			29,040	20,328
<b>TOTAL FOR MAP NO. 19</b>								<b>2.75</b>				<b>440</b>			<b>29,040</b>	<b>20,328</b>
<b>TOTAL FOR PROJ NO. 2026CPT.06.08.20782.2</b>								<b>4.96</b>				<b>793</b>		<b>31,775</b>	<b>47,731</b>	<b>33,412</b>
<b>GRAND TOTAL</b>								<b>36.55</b>				<b>5,849</b>	<b>1,000</b>	<b>124,767</b>	<b>365,483</b>	<b>255,838</b>
<b>GRAND TOTAL</b>								<b>36.55</b>				<b>5,849</b>	<b>1,000</b>	<b>124,767</b>	<b>621,321</b>	